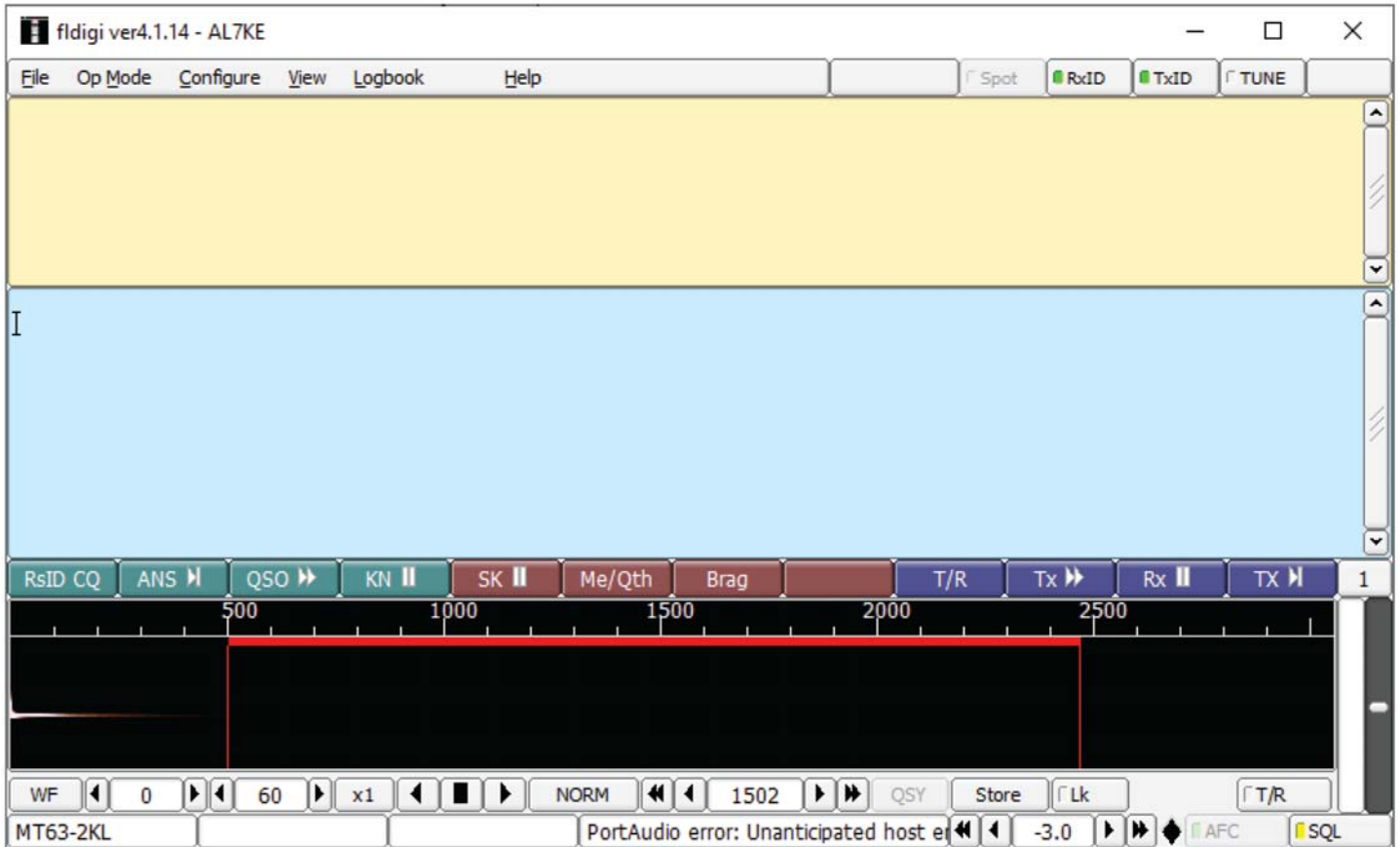


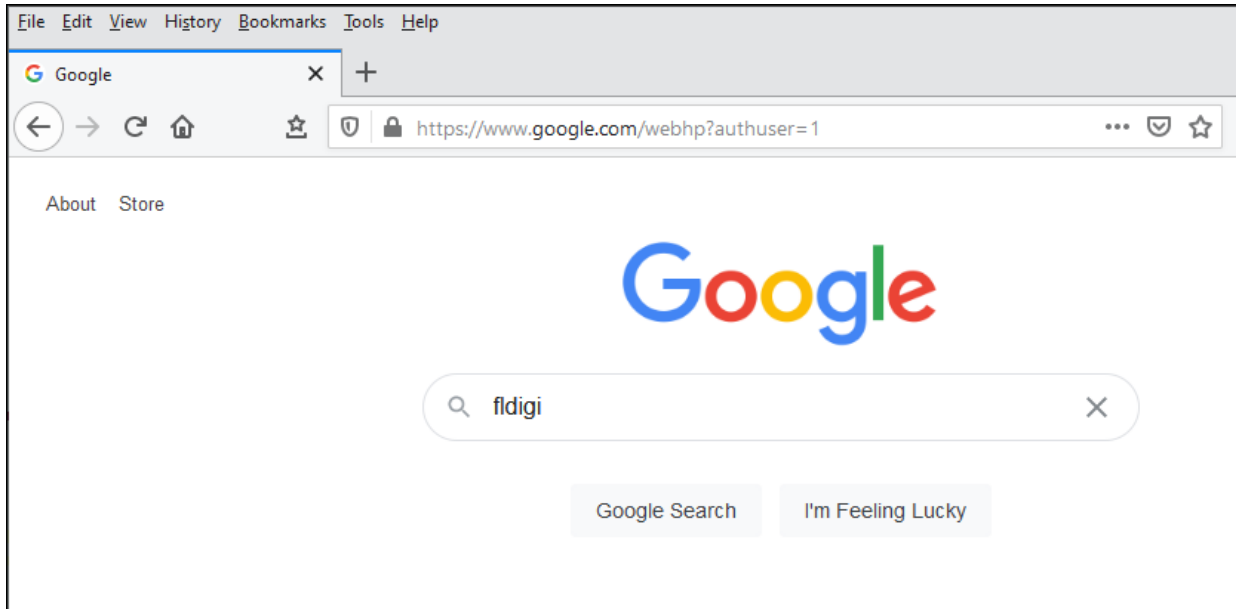
# Fldigi/FImsg/NBEMS (Narrow Band Emergency Messaging Software)

## SETUP Rev 8 Dec 7, 2020

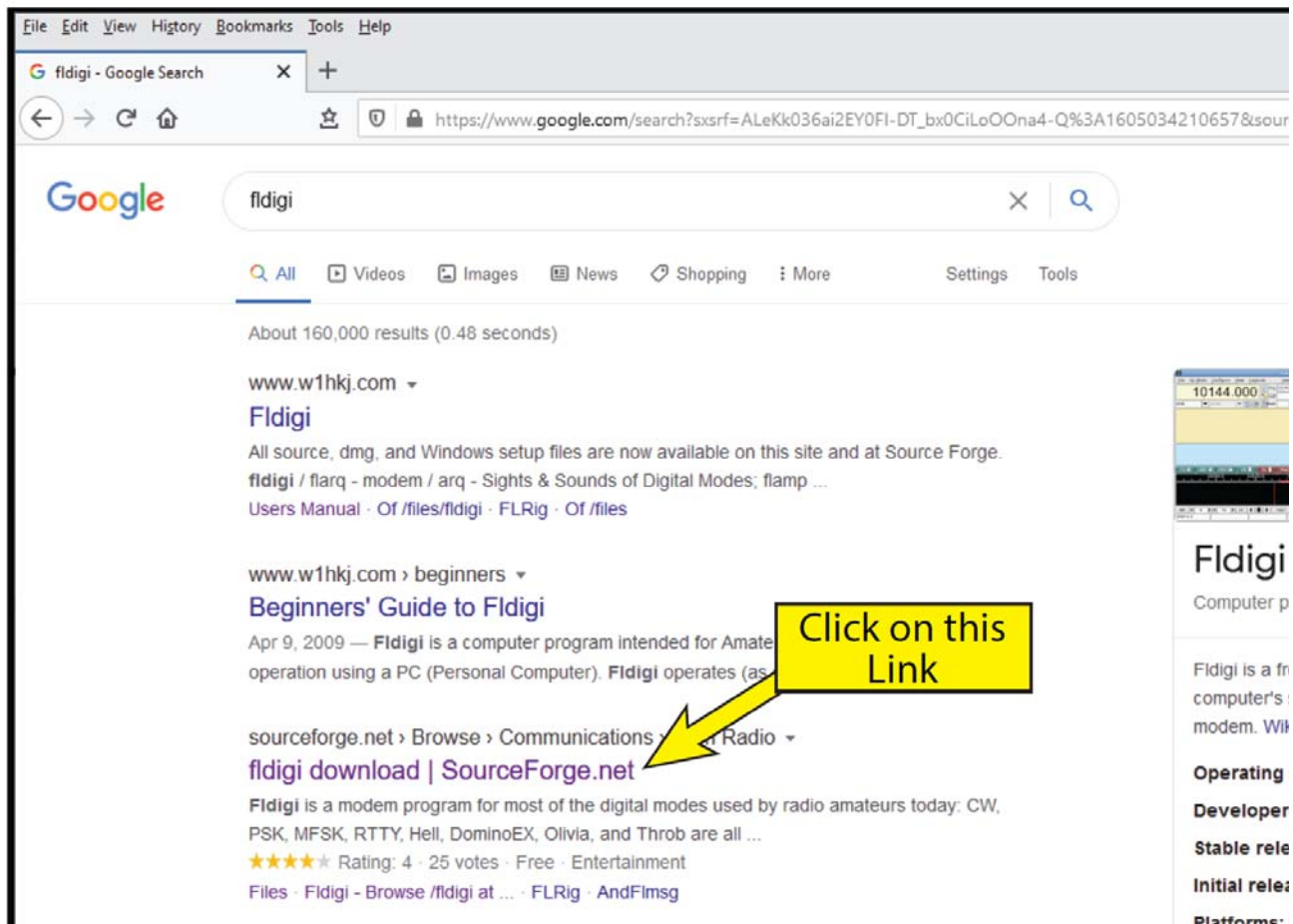
**NOTE:** Figures created in adobe illustrator, saved to pdf with editing preserved, then copied using Acrobat Full Version into this word document. For source files --- [wsbrophy@outlook.com](mailto:wsbrophy@outlook.com)

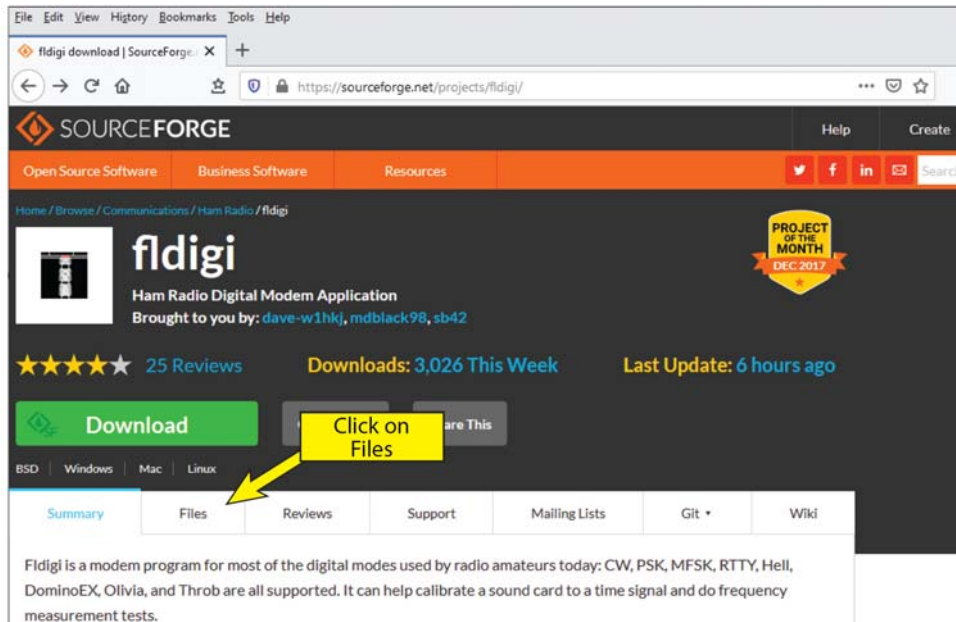


The first thing we need to do is download three setup.exe files.  
To do this, open your favorite browser and type in "fldigi" and click search.



The results of the search will look something like this.

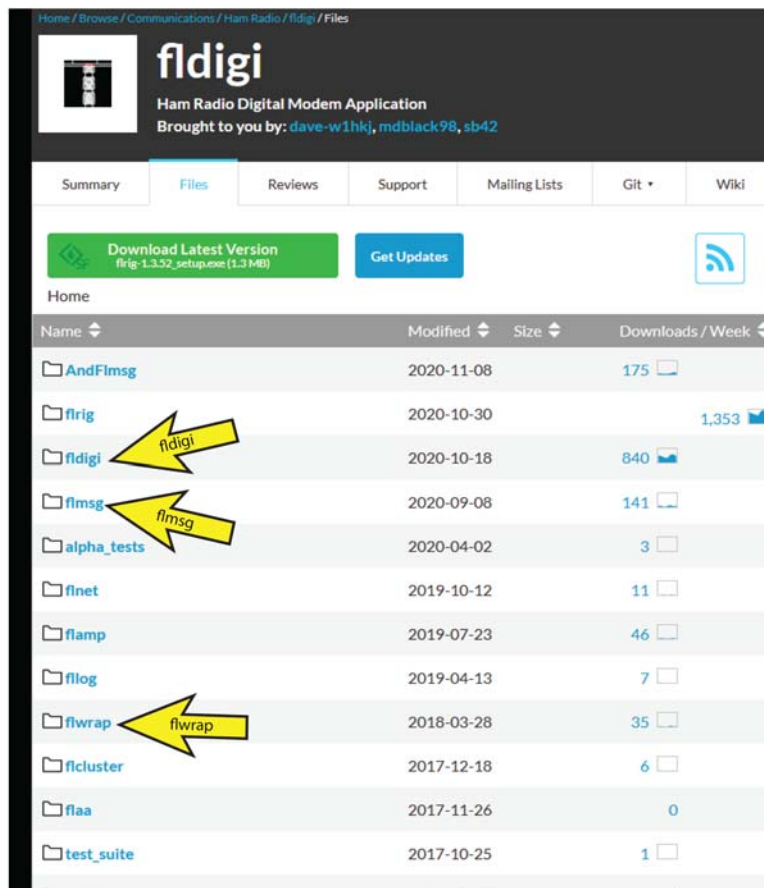




The files window opens with a long list of file folders. We are only concerned with these three:

- FLdigi,
- FLmsg
- FLwrap.

This window allows us to open one folder at a time. As a result we will be coming back to this window for additional folders. Make note of it !



Click on the fldigi folder shown above and you get

**Special Note: Download but don't install yet**

The screenshot shows the SourceForge project page for fldigi. The page includes a navigation bar with 'Open Source Software', 'Business Software', and 'Resources'. Below the project name and description, there are tabs for 'Summary', 'Files', 'Reviews', 'Support', 'Mailing Lists', 'Git', and 'Wiki'. A green button labeled 'Download Latest Version' and a blue button labeled 'Get Updates' are visible. The main content is a file list table with columns for Name, Modified, Size, and Downloads / Week. Three yellow arrows point to the following files:

Name	Modified	Size	Downloads / Week
Parent folder			
readme.txt	2020-11-13	2.0 kB	126
fldigi.txt	2020-11-13	2.0 kB	52
fldigi_4.1.16-help.pdf	2020-11-13	13.7 MB	131
fldigi-4.1.16_x86_64.dmg	2020-11-13	6.6 MB	148
fldigi-4.1.16_i386.dmg	2020-11-13	6.7 MB	133
fldigi-4.1.16_setup.exe	2020-11-13	6.6 MB	1,580
fldigi-4.1.16.tar.gz	2020-11-13	4.8 MB	204
flarq-help.pdf	2018-06-12	249.1 kB	23
flarq-help.zip	2018-06-12	425.8 kB	5
Totals: 9 Items		39.1 MB	2,402

Go back to the list of file folders. Click on the Flmsg Folder

We will install these later as well

The screenshot shows the file list for the flmsg folder. The table lists the following files and folders:

Name	Modified	Size	Downloads / Week
Parent folder			
ARC_custom_forms	2020-09-11		38
custom_forms	2020-07-25		0
Custom_forms	2019-09-22		1
readme.txt	2020-09-08	308 Bytes	3
flmsg-4.0.17_i386.dmg	2020-09-08	1.4 MB	4
flmsg-4.0.17_setup.exe	2020-09-08	1.3 MB	85
flmsg-4.0.17_x86_64.dmg	2020-09-08	1.7 MB	9
flmsg-4.0.17.tar.gz	2020-09-08	876.6 kB	27
flmsg-help.zip	2020-06-01	3.2 MB	1
flmsg-help.pdf	2020-06-01	2.5 MB	8

Now go back to the list of file folders. Click on the flwrap folder. Don't install it yet.

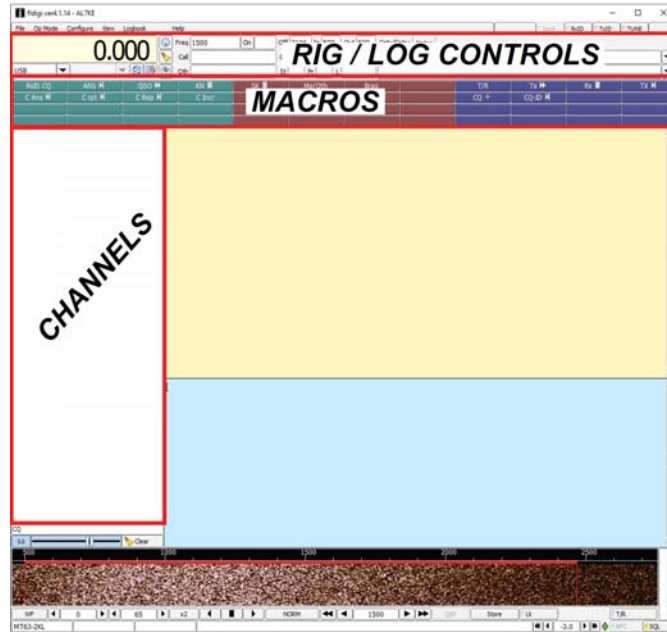
Parent folder				
<a href="#">readme.txt</a>	2018-03-28	733 Bytes	1	
<a href="#">flwrap-help.zip</a>	2018-03-28	223.2 kB	1	
<a href="#">flwrap_help.pdf</a>	2018-03-28	153.3 kB	7	
<a href="#">flwrap-1.3.5_setup.exe</a>	2018-03-28	472.7 kB	19	
<a href="#">flwrap-1.3.5_macos.dmg</a>	2018-03-28	573.3 kB	1	
<a href="#">flwrap-1.3.5_ppc.dmg</a>	2018-03-28	351.6 kB	1	
<a href="#">flwrap-1.3.5.tar.gz</a>	2018-03-28	200.8 kB	14	
<a href="#">flwrap-1.3.5_i386.dmg</a>	2018-03-28	336.2 kB	2	
<b>Totals: 8 Items</b>		<b>2.3 MB</b>	<b>46</b>	

Install and open fldigi

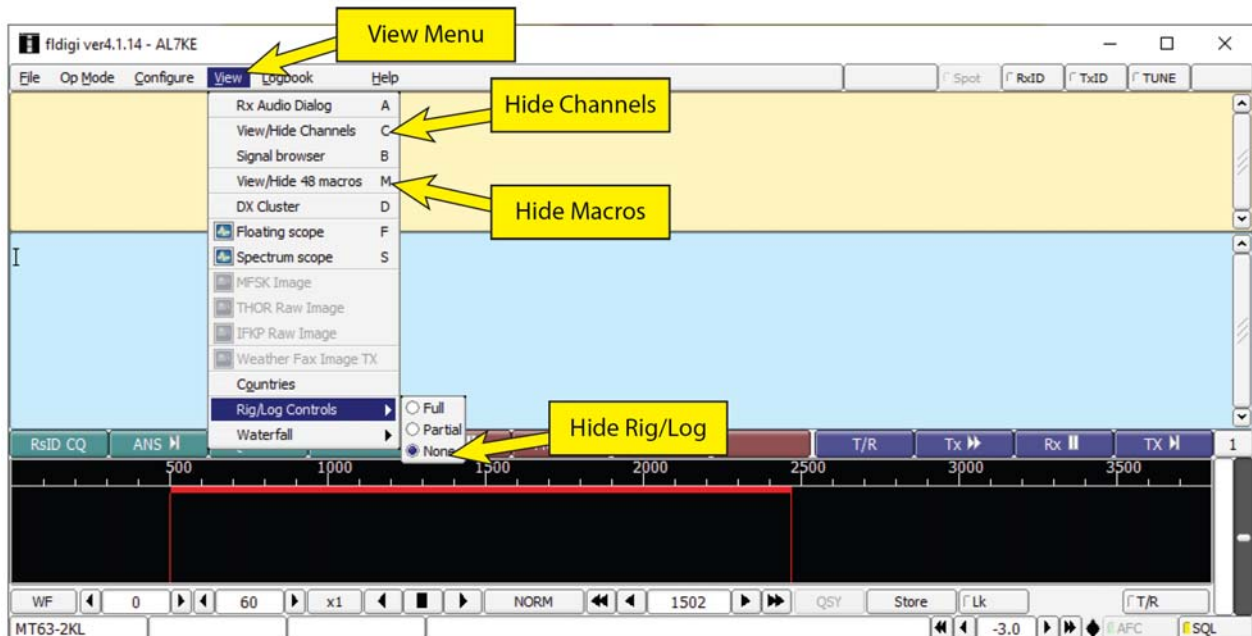
If your setup wizard did not take you through the set up, here is how to do it manually.

We will begin with the main FLdigi screen.

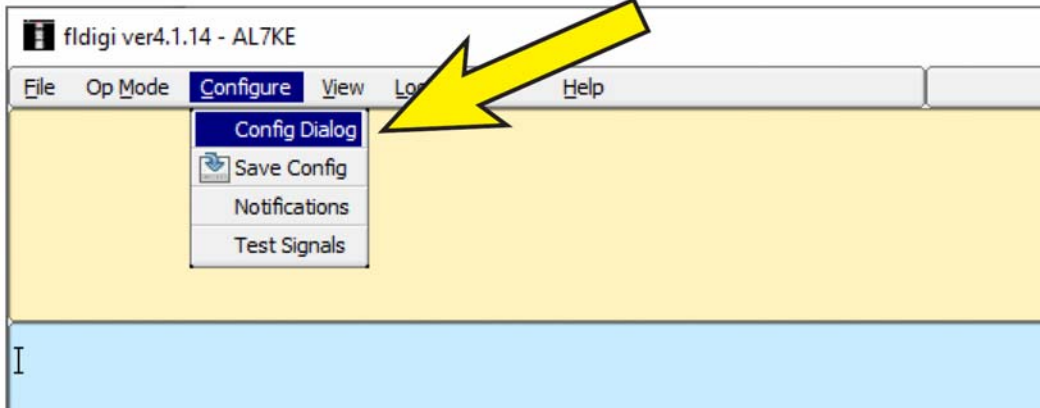
This screen has 3 unwanted sections; Rig/Log, Macros, and Channels. We are going to hide them.



Go to the view menu and hide channels, macros, and rig log controls



Now, click on “Configuration Dialog”

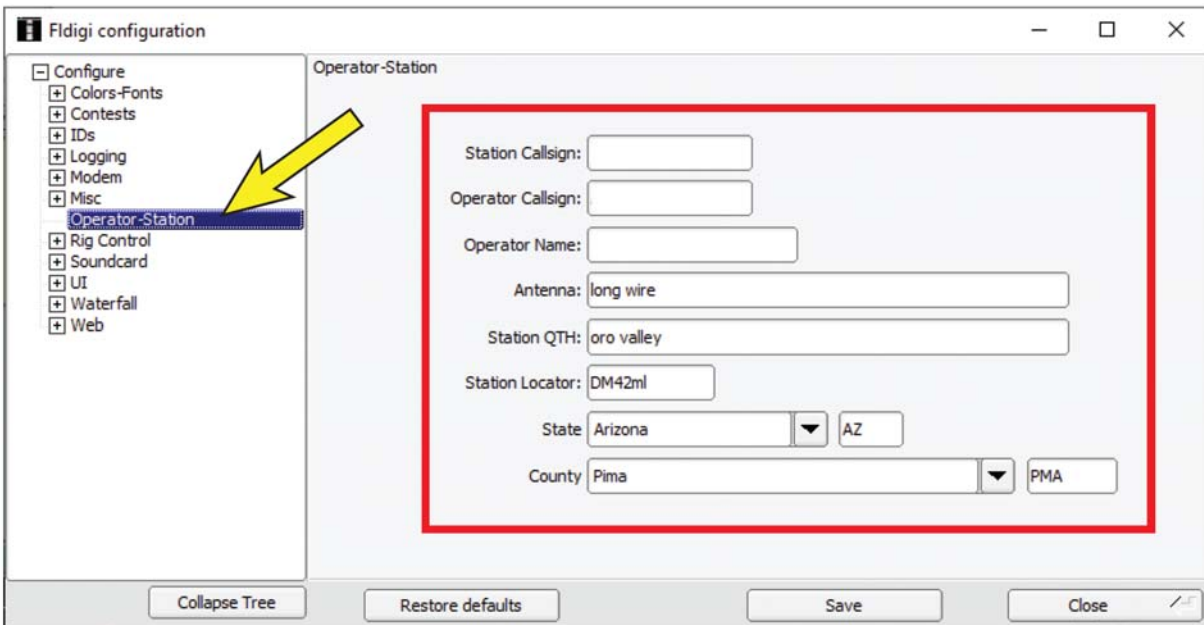


You will be presented with the Configuration Dialog. see below.

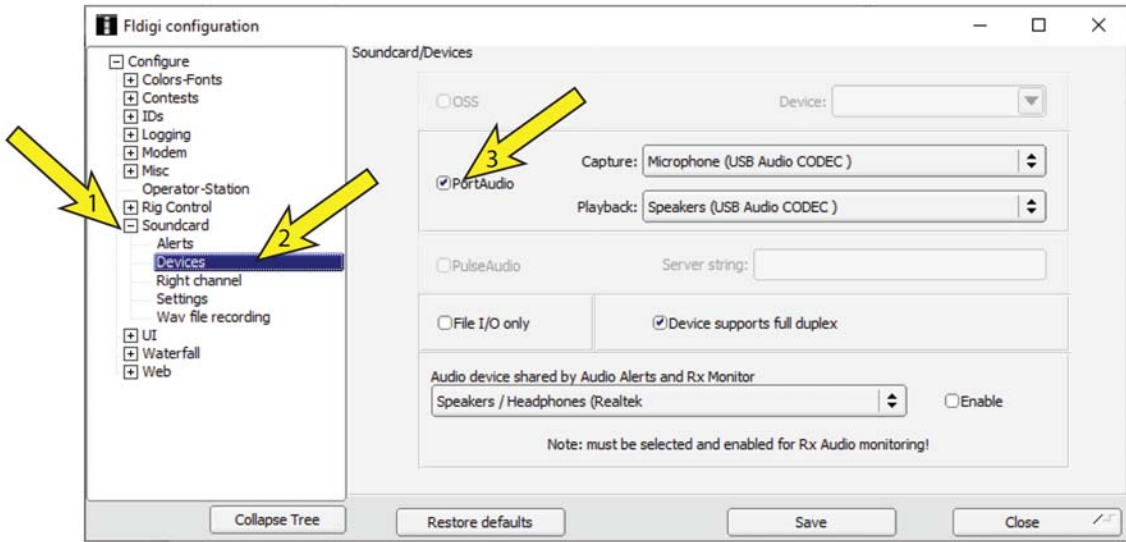
The first item to configure is the Operator information.

Follow the arrow and populate the data with your call sign and other requested information.

Be sure to click SAVE.

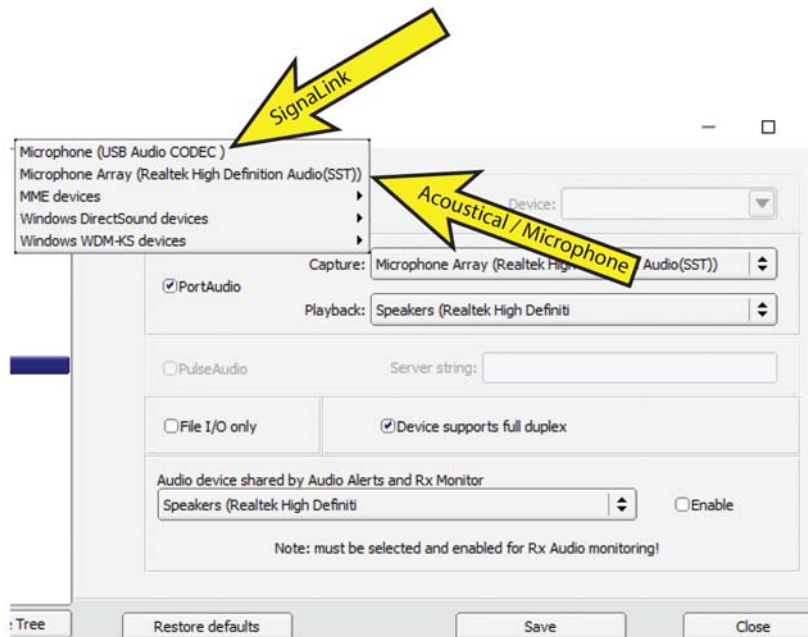


After you click **SAVE** the Configuration Dialog will remain open and now you can expand the sound card sub-dialog. The yellow arrows are labeled 1,2, and 3 so click in that order. Check the **PortAudio** box.



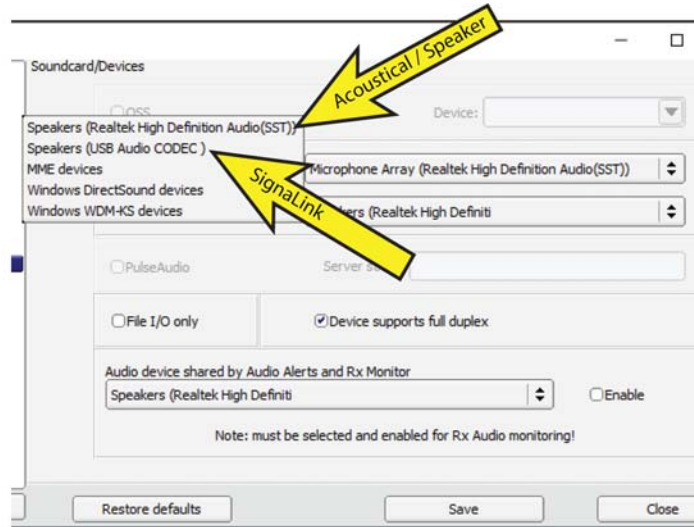
We must now set the sound card to listen (Capture) the device of our choice. This is the first area where things can get confusing. There are two ways to process the sound from the computer to the radio. First is by use of a wire connected device such as a Signalink USB. The other is by holding the radio microphone near the computer speakers and having the computer close enough to hear the radios speaker. This is called acoustical coupling. It sounds a bit cumbersome however, with very little practice it becomes very easy to accomplish.

- For SignalLink coupling select the Microphone (USB Audio CODEC)
- For Acoustical coupling choose the internal microphone or equivalent.



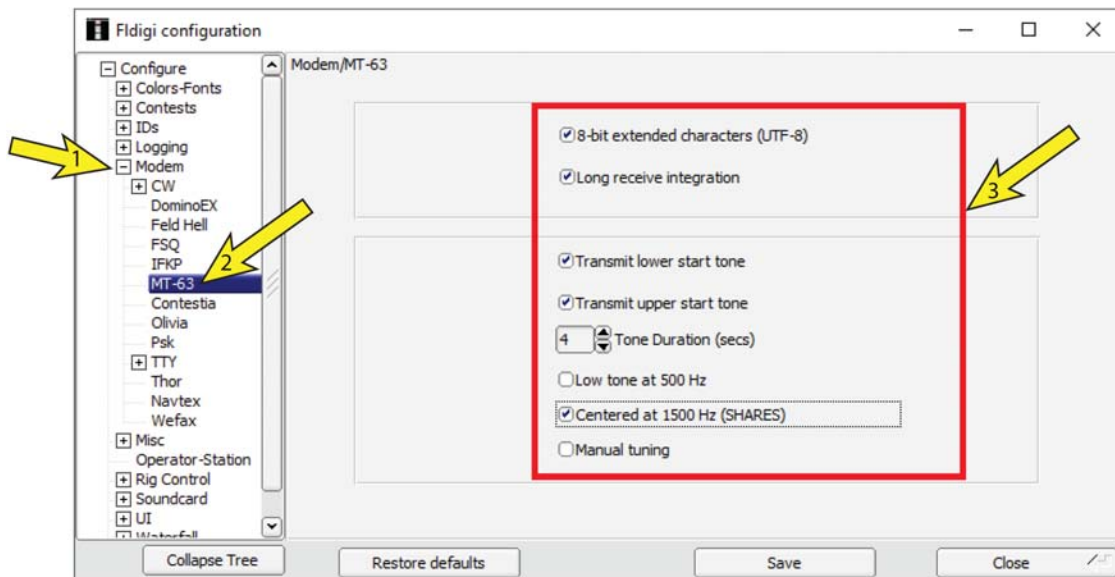


You will also choose the same system for the playback box. i.e.: either Internal Audio Codex or USB Audio Codex. When both are selected click save and close. **SAVE** your settings.

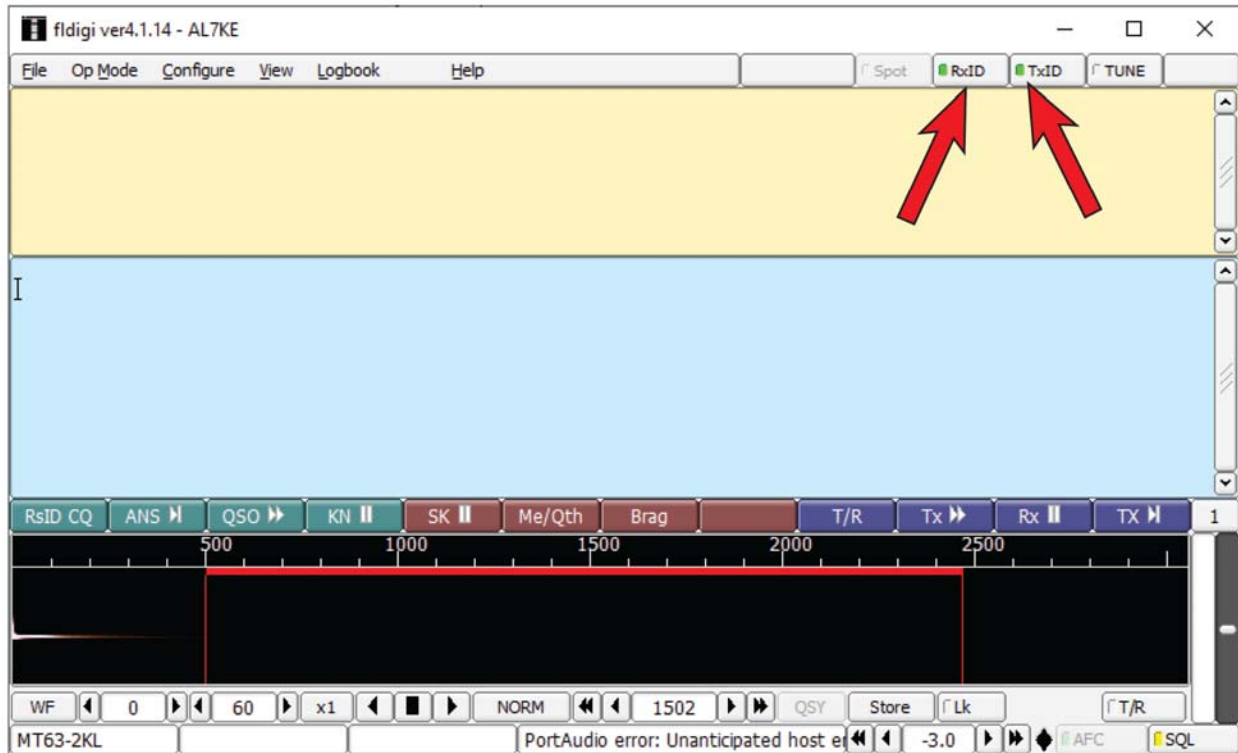


Select Modems. Select MT63. In the MT63 window check the boxes as shown:

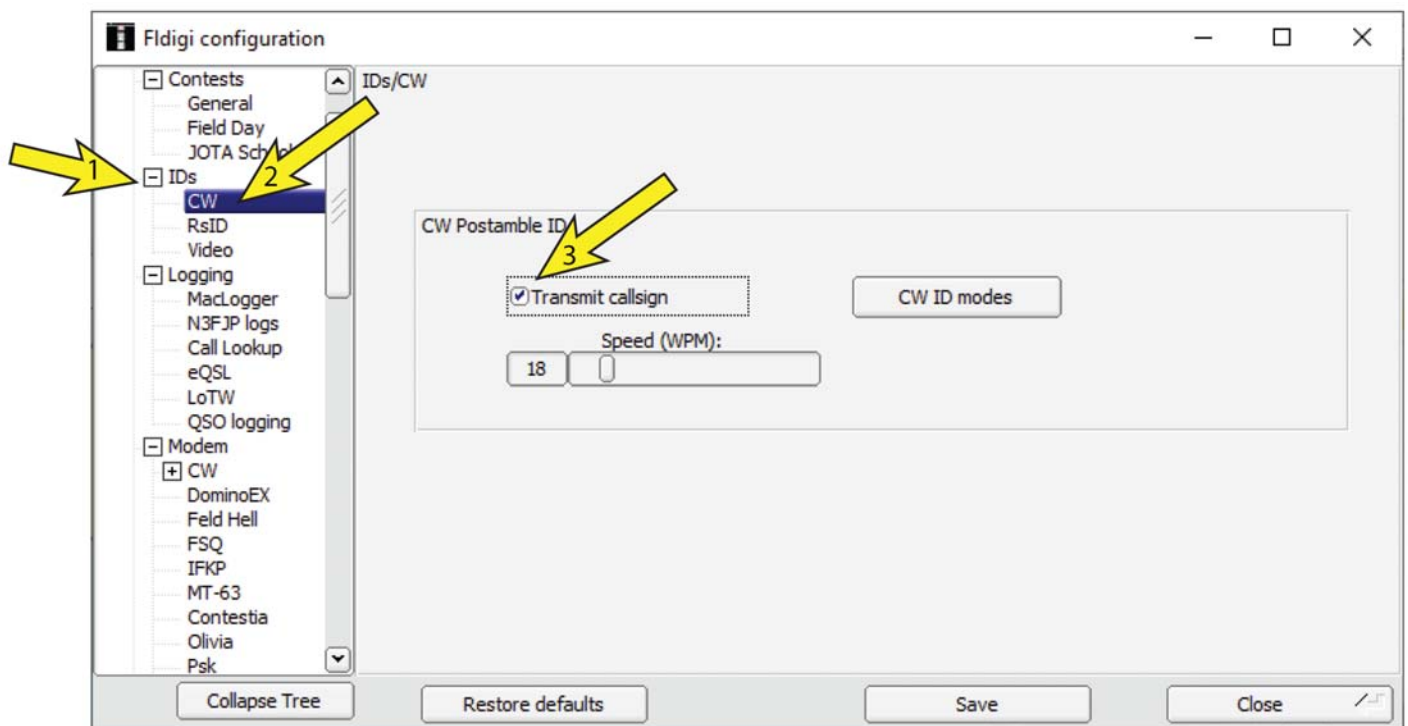
- 8 bit extended characters
- Long receive integration
- Transmit lower start tone
- Transmit upper start tone
- Tone duration 4 seconds
- Centered at 1500 hz (SHARES)
- Manual tuning is greyed out and can not be selected



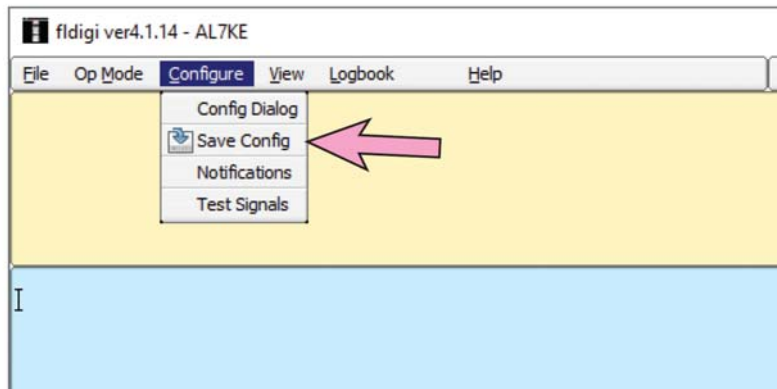
Back in the FLdigi window make sure the RX ID and TX ID buttons at the upper right corner are green.



This next one is optional. I use it so I don't have to worry about IDing. In the Configuration Dialog select IDs, then CW, then check the transmit call sign box. Now SAVE



Once again, back to the FLdigi window. In the Configure drop down select Save Config. This saves all you have done so far. This also completes the FLDIGI setup. The next pages deal with FLmsg setup.



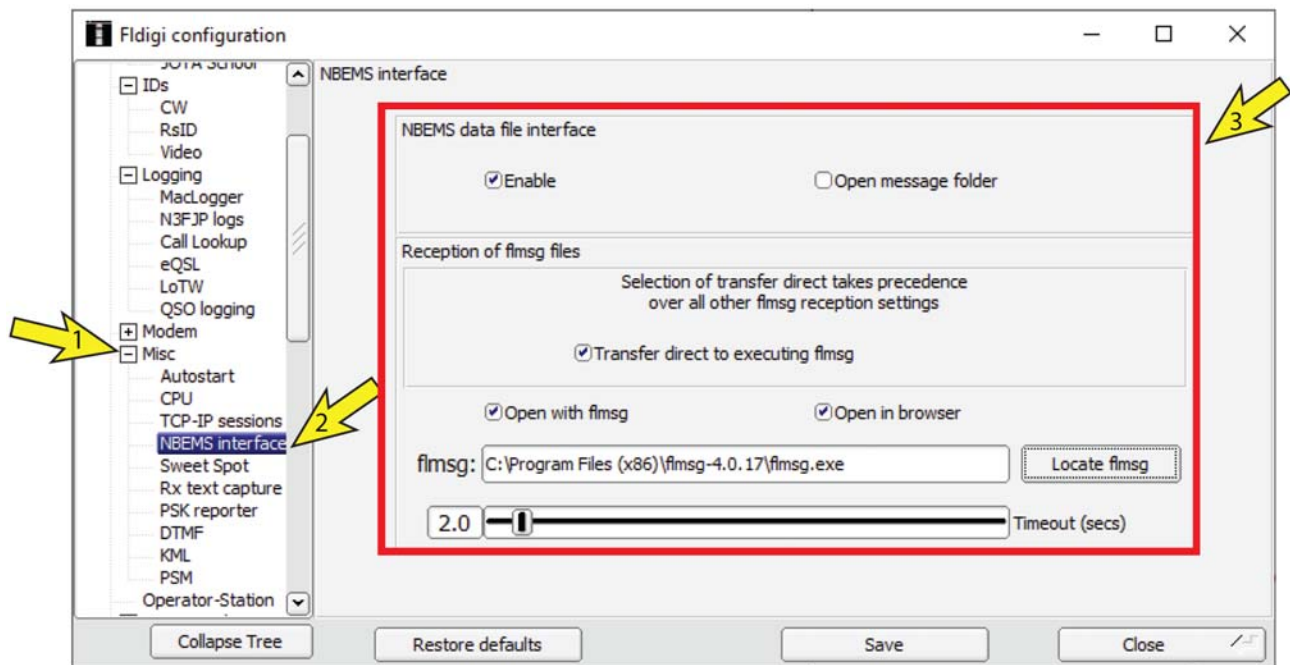
**THIS SECTION IS WINDOWS ONLY SKIP TO  
PAGE 15 FOR MACINTOSH**

## **WINDOWS FLMSG SETUP**

In the configuration dialog select Misc, then NBEMS.  
In the NBEMS window check the boxes as shown:

- Enable
- Transfer direct to executing flmsg
- Open with flmsg
- Open in browser
- ***Do Not Check "Open message folder"***

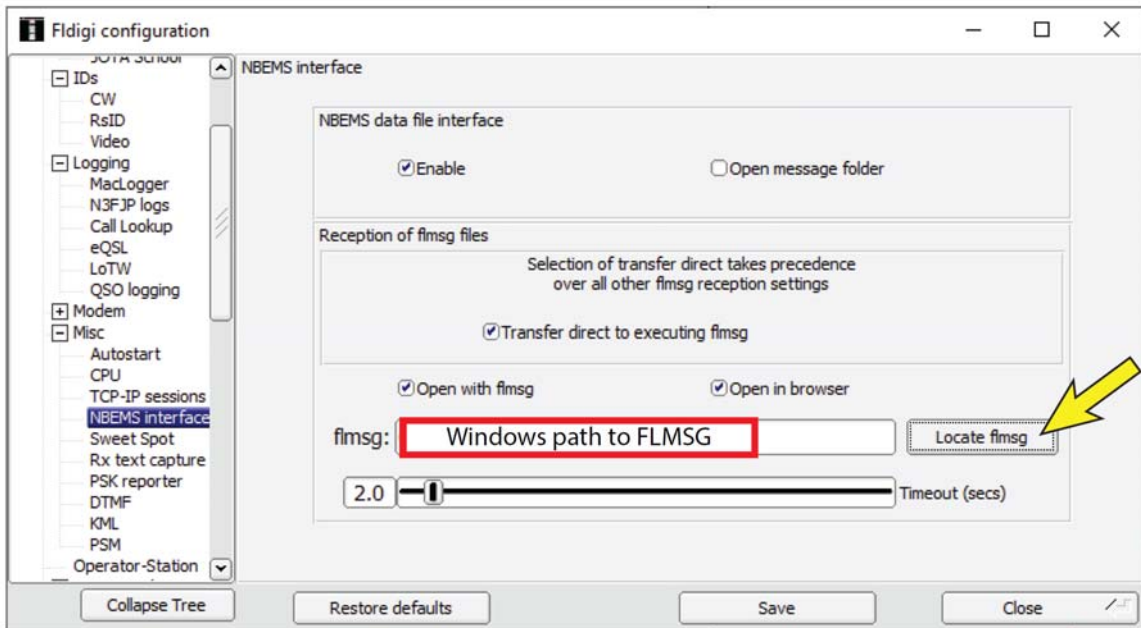
now -- **SAVE**



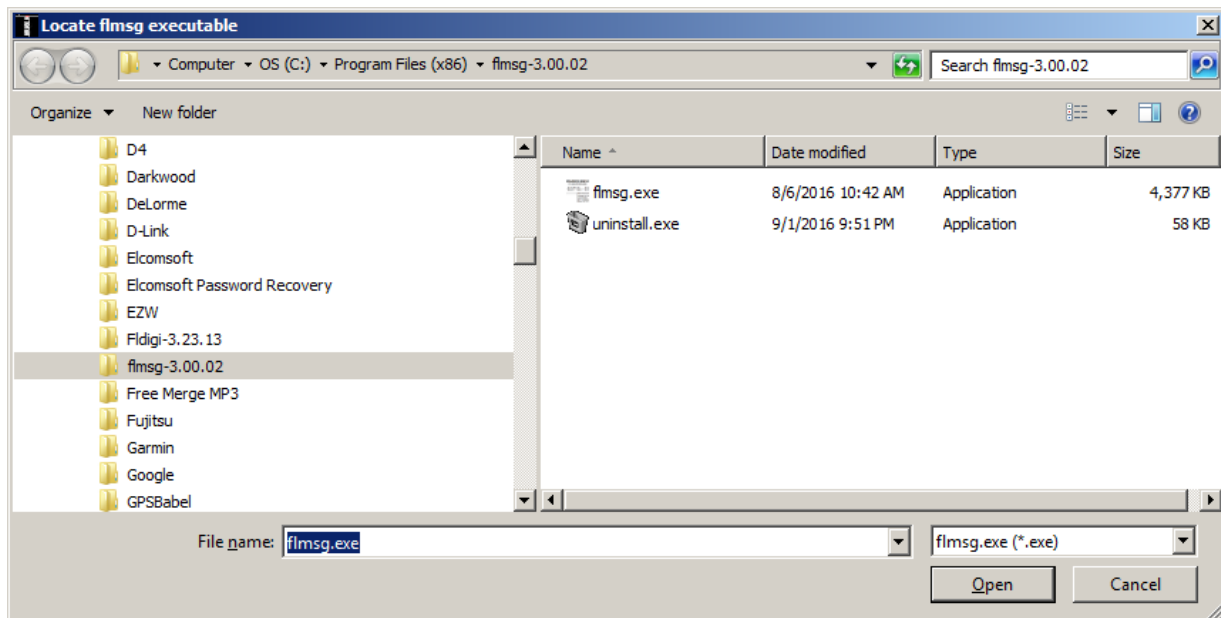
**THIS SECTION IS WINDOWS ONLY SKIP TO  
PAGE 15 FOR MACINTOSH**

## **WINDOWS FLMSG SETUP**

The next step is **VERY CRITICAL**. There may or may not be anything in the long white box. Regardless insure that the box is **COMPLETELY** cleared out. Once completely cleared out click the Locate flmsg button. Indicated by the arrow. This should bring up the path to the flmsg.exe file.



Navigate through your computer to the flmsg.exe file. Double click the flmsg.exe file and it should populate the cleared out box.



**THIS SECTION IS WINDOWS ONLY SKIP TO  
PAGE 15 FOR MACINTOSH**

## **WINDOWS FLMSG SETUP**

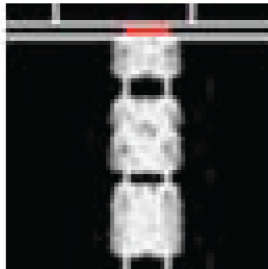
**Special Note:** When you or your computer updates the Fldigi and Flmsg files the program will add the updated location of flmsg to the information already existing in the box. This requires one to have to clear the box and relocate the flmsg.exe file again.

Fldigi uses the information in this box to automatically locate, open FLmsg and populate the NBEMS form with the information sent.

**END OF WINDOWS SETUP SKIP TO  
PAGE 17 UNLESS YOU HAVE A MACINTOSH**

**THIS SECTION IS MACINTOSH ONLY**

**FLMSG SETUP**

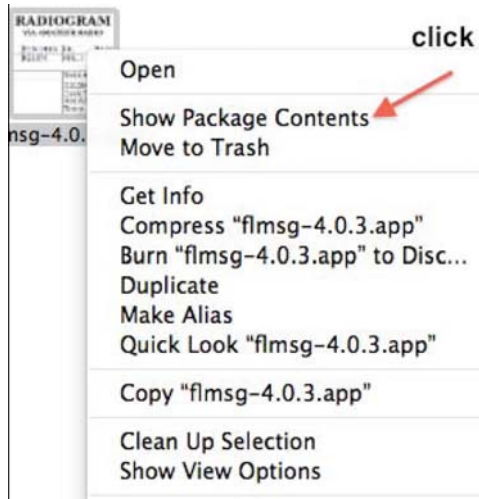


`fldigi-4.0.12.app`



`flmsg-4.0.3.app`

Right click the flmsg icon then:



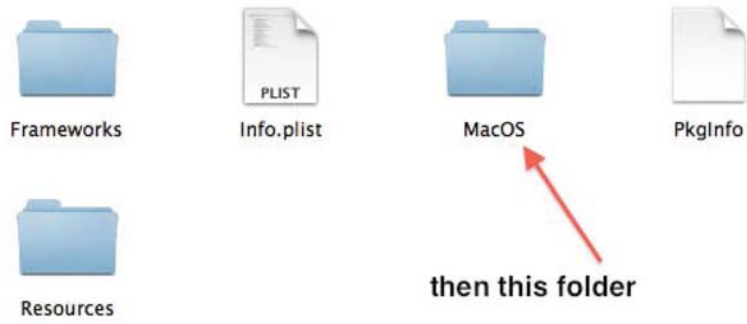
now open the contents folder



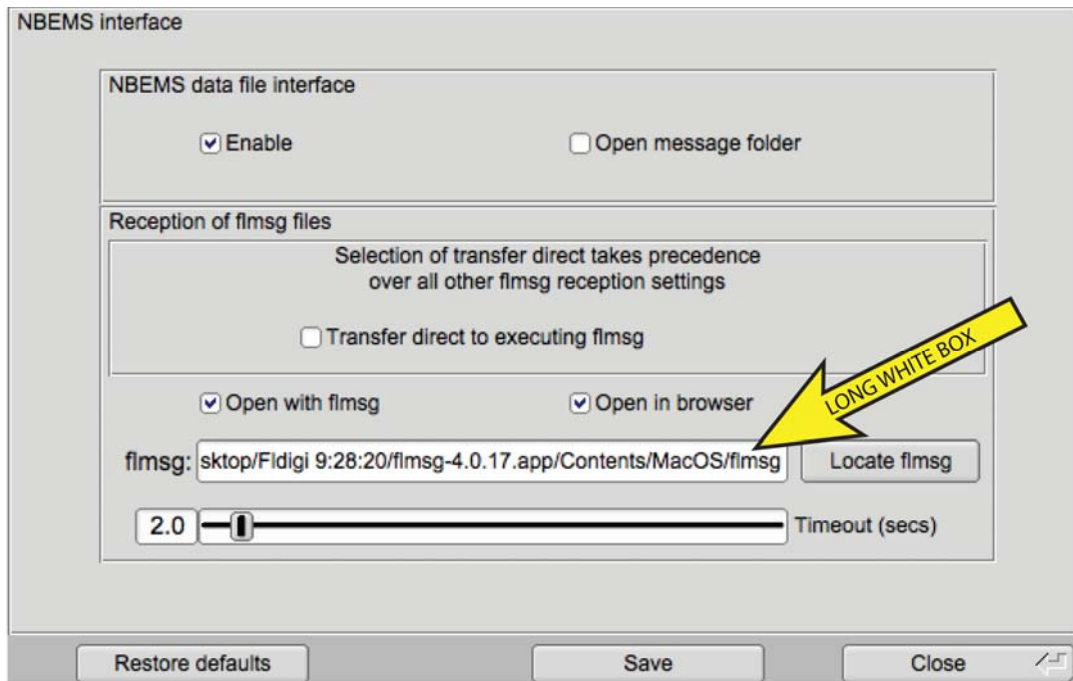
Contents



**THIS SECTION IS MACINTOSH ONLY**



drag this to the long white box



**END OF MACINTOSH SETUP**

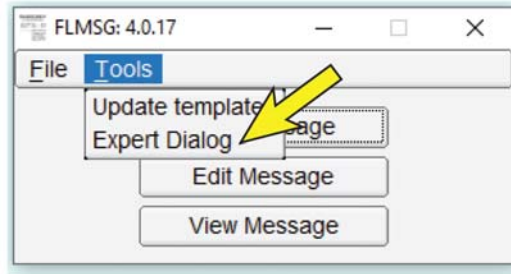


---

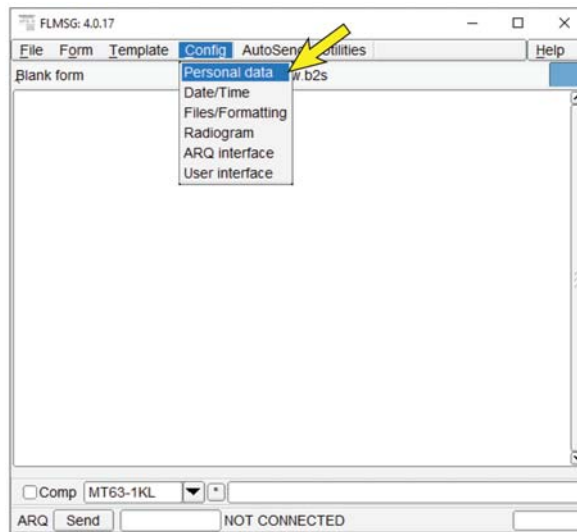
Now we are going to setup FLmsg.

Open FLmsg

Sometimes you will get the flmsg open dialog. If so, click on tools, then expert dialog.

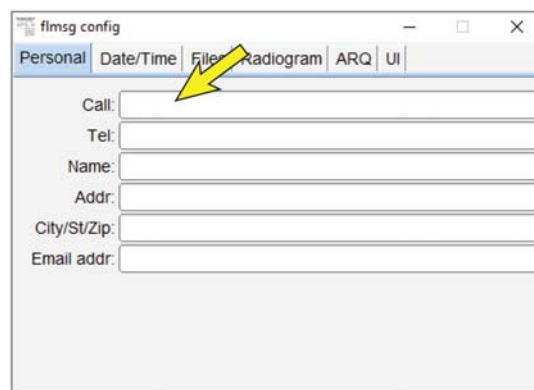


In the FLmsg expert dialog select Config – Personal



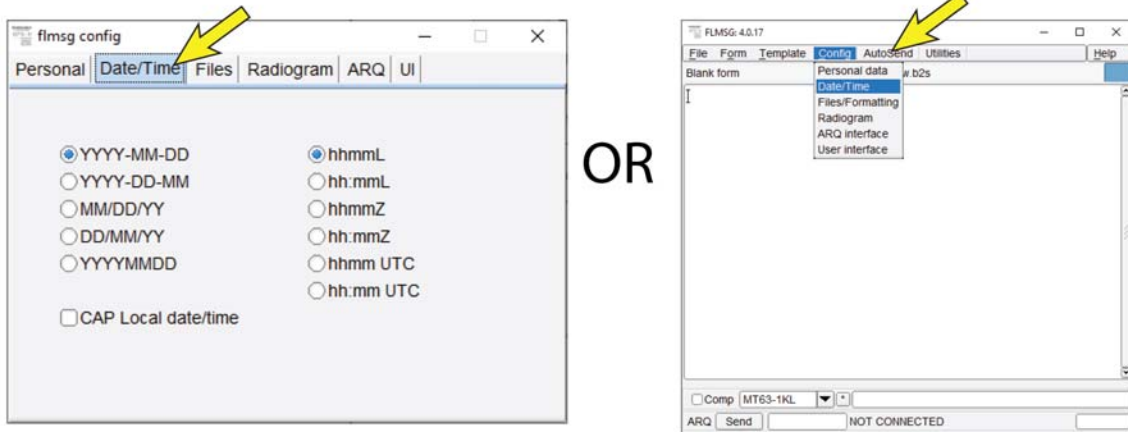
This presents the personal data dialog

The FLmsg personal dialog opens. In some cases the information may have transferred from the operator information in FLdigi. If not just fill it in. Note that there is NO Save button.

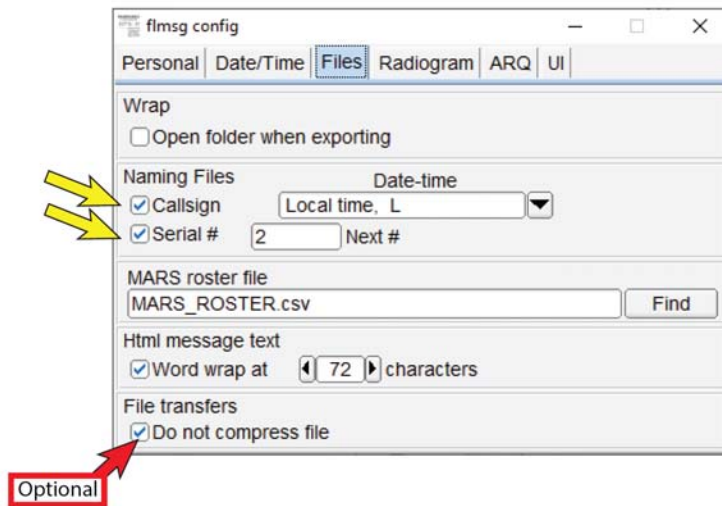


Next, Click the Date / Time Button. On this page choose the time format of your choice. then click the next menu (files)

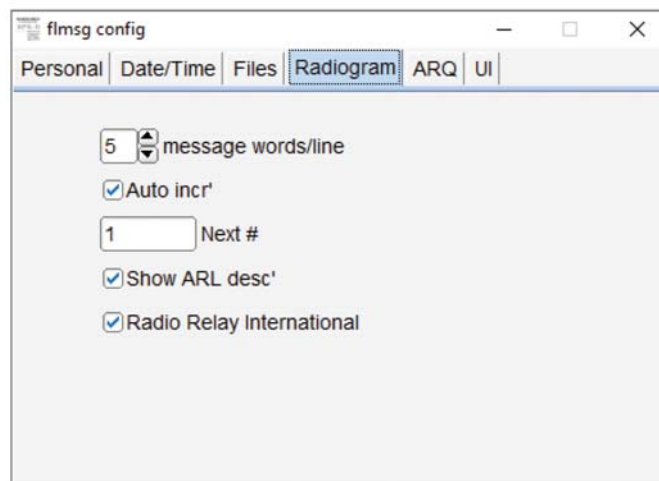
**NOTE:** There is more than one way to access these dialogs.



Open the FILES dialog. Generally the information here will be correct. However be sure the Call sign and Serial# boxes are checked.



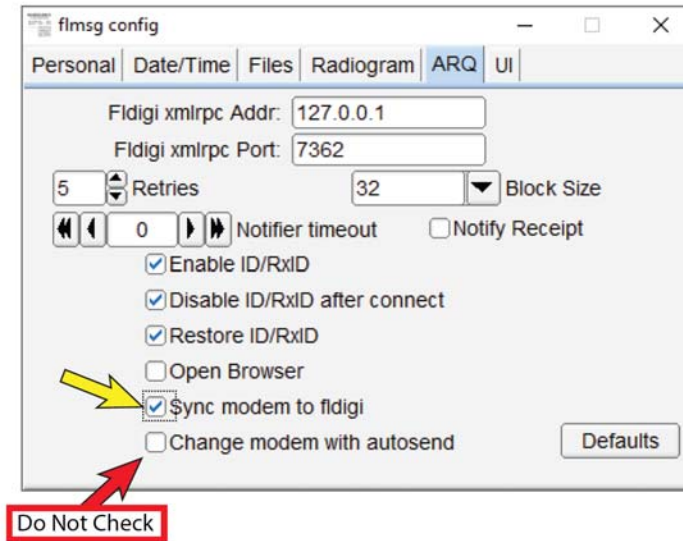
Click the Radiogram button. The Radiogram page opens. Most items are already correct.



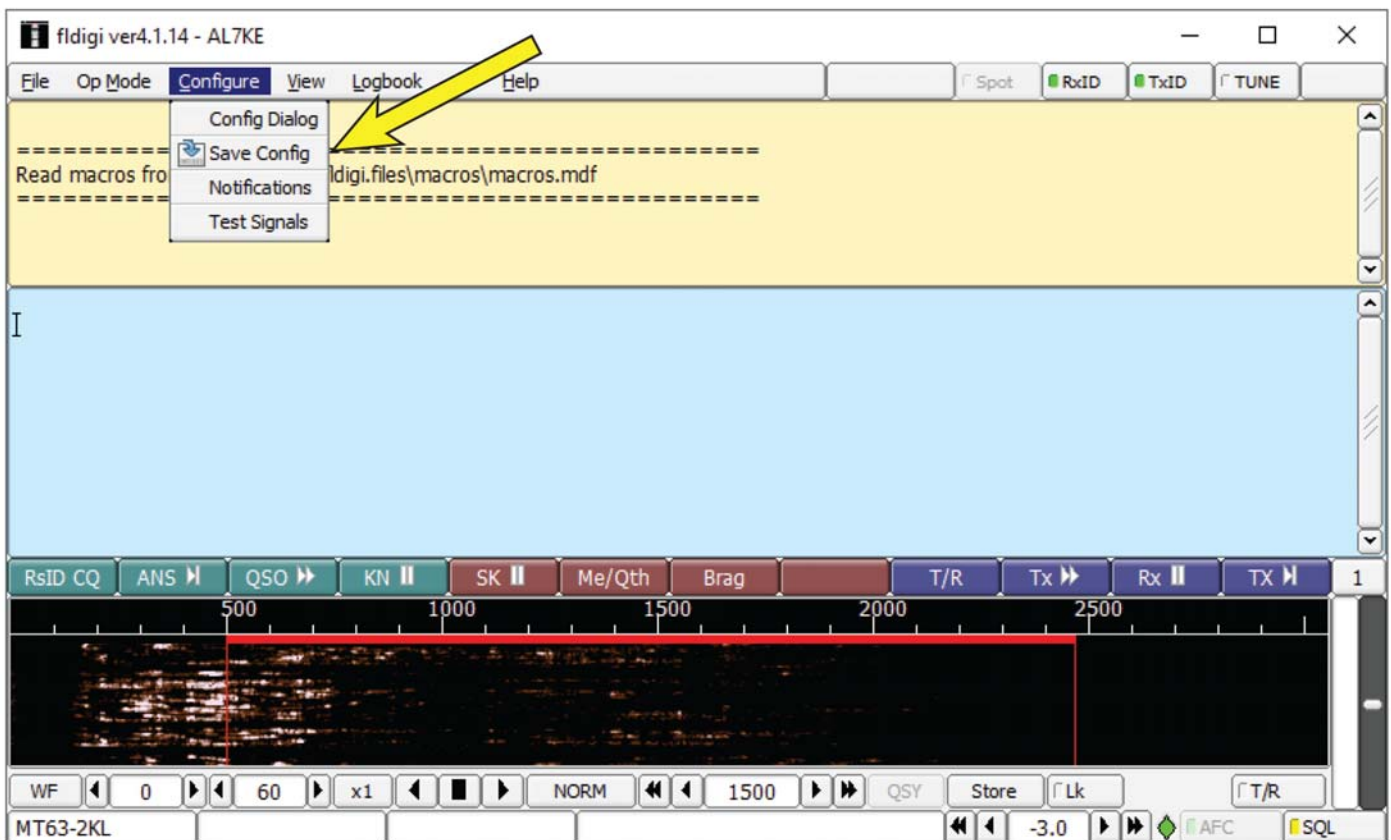
Click the ARQ button.

This dialog will generally be correct. Here though we are concerned with making sure that fldigi is in Sync with Fldigi (yellow arrow).

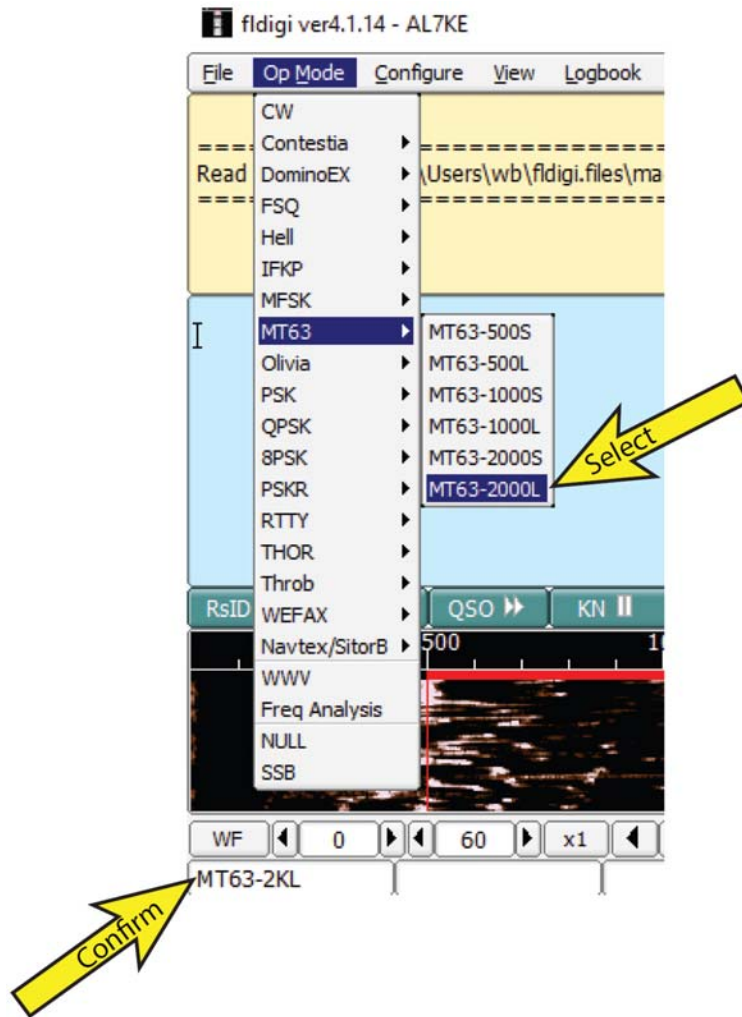
DO NOT check the Change modem with autosend button.



Now go back to the FLdigi main menu configure drop down menu and select Save Config.

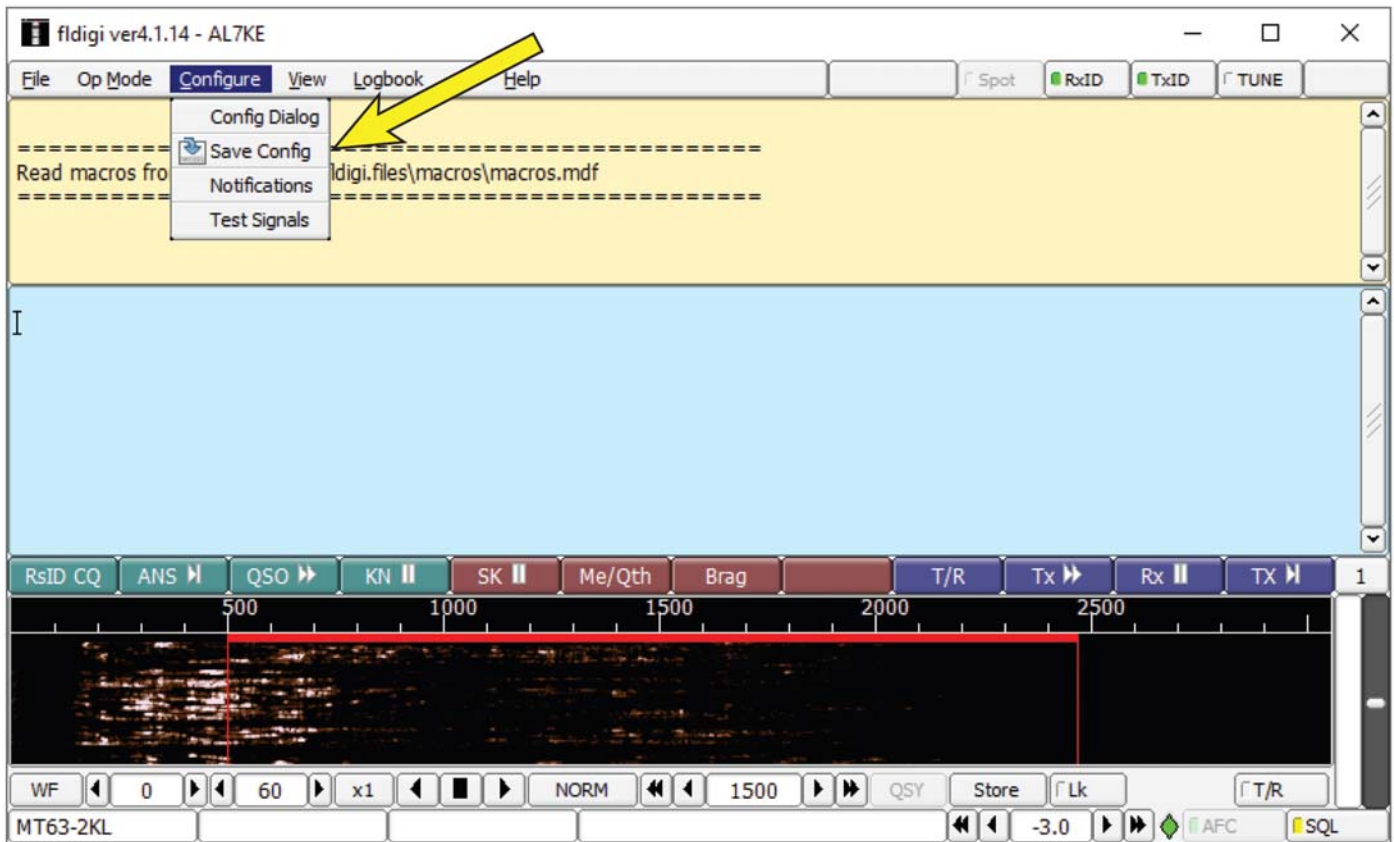


While in the main FLdigi window, click on the Op Mode drop down and follow the drop down to MT63 and in the secondary dropdown select MT63-2000L.



The confirm box shows what mode you are in

Now, Just to be sure, lets go to the main FLdigi main configure drop down and do a Save Config one more time.



There are many other things that can be done with FLdigi however, this setup is for the NBEMS (Narrow Band Emergency Messaging System) mode.

### OPERATING HINTS

Here are some things to look for

#### SQUELCH

In the lower right hand corner of FLdigi is the squelch setting. If it is too high or low you will be exposed to no reception or excessive invalid characters. Try setting it in the middle for starters.



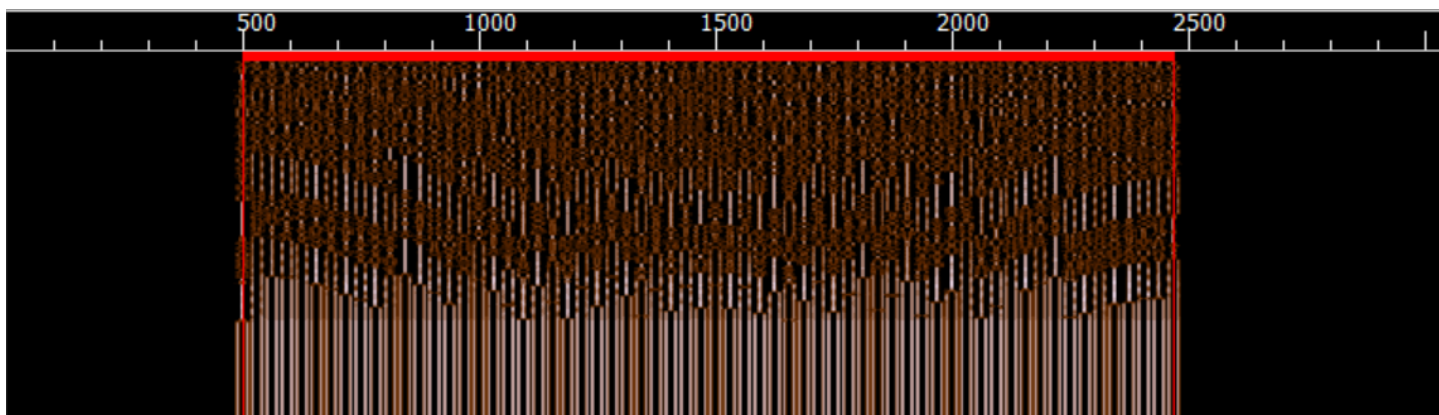
## WATERFALL

Set your receive audio gain by moving the computer microphone or other means for a proper water fall display.

A dropoff on the edges is bad.

Oversaturation is bad.

Here is a good waterfall



The waterfall below is saturated in the center and drops off the edges. It still works but is not ideal.

Your waterfall will be a compromise of your radio and computer audio card. Extreme deviations from either of these illustrations can cause problems.

